

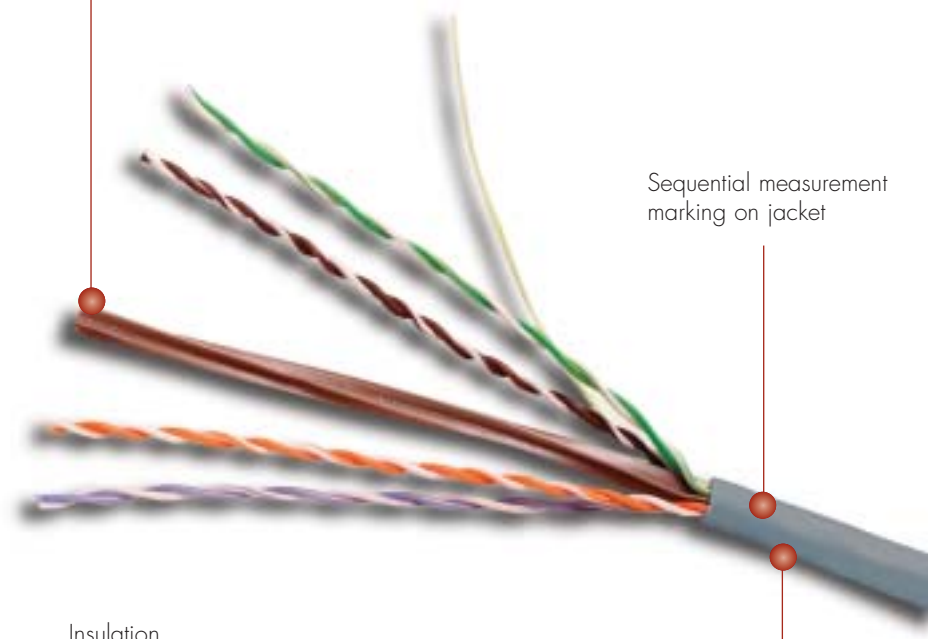
SYSTEM 6[®] CABLE

System 6 cable provides significant headroom above all TIA/EIA and ISO/IEC category 6/class E transmission performance specifications. Combine our high performance category 6 connectivity with System 6 cable and the result is a system with superior electrical performance for optimum applications support.

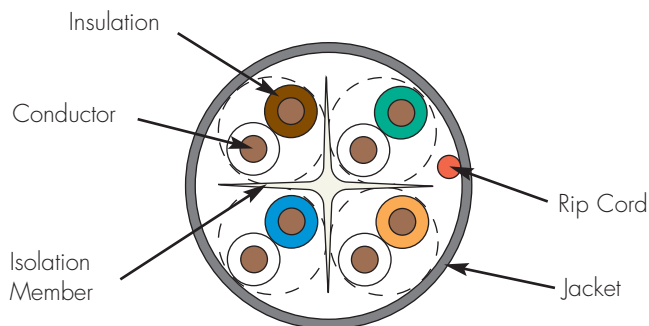
6

CABLE

Centre isolation member maintains pair geometry before, during and after installation for optimal NEXT performance



Sequential measurement marking on jacket



Cable packaged in a reel-in-a-box (305m) to protect product during shipping and facilitate tangle-free installation

Cable Construction

- UTP
- 0.5mm solid bare copper
- 5.8mm max jacket diameter
- Round jacket
- Centre isolation member

LSOH, CMX, CMR and CMP jacket options available

Compliance

- ISO/IEC 11801:2002 2nd Edition (Category 6)
- ANSI/TIA/EIA-568-B.2-1
- IEC 61156-5 1st Edition
- LSOH: IEC 332: Part 1, IEC 754, and IEC 1034
- UL CMX
- UL CMR and CSA FT4
- UL CMP and CSA FT6
- LSOH: IEC 332.3.c

PRODUCT INFORMATION

CABLE

TRANSMISSION PERFORMANCE

TIA/EIA & ISO/IEC

SIEMON WORST CASE

Frequency (MHz)	Maximum Insertion Loss (dB/100m)		Minimum NEXT (dB/100m)		Minimum PS NEXT (dB/100m)		Minimum ELFEXT (dB/100m)		Minimum PS ELFEXT (dB/100m)		Minimum Return Loss (ns/100m)		Maximum Propagation Delay (ns/100m)		Maximum Delay Skew	
	1	2	1	2	1	2	1	2	1	2	1	2	1	2	1	2
1.0	2.0	2.0	74.3	75.3	72.3	73.3	67.8	70.8	64.8	68.8	20.0	20.0	570	550	45.0	35.0
4.0	3.8	3.7	65.3	68.3	63.3	64.3	55.8	58.8	52.8	56.8	23.0	23.6	552	532	45.0	35.0
10.0	6.0	5.9	59.3	62.3	57.3	60.3	47.8	50.8	44.8	48.8	25.0	26.0	545	525	45.5	35.0
16.0	7.6	7.5	56.2	59.2	54.2	57.2	43.7	46.7	40.7	44.7	25.0	26.0	543	523	45.0	35.0
20.0	8.5	8.4	54.8	57.8	52.8	55.8	41.8	44.8	38.8	42.8	25.0	26.0	542	522	45.0	35.0
31.25	10.7	10.6	51.9	54.9	49.9	52.9	37.9	40.9	34.9	38.9	23.6	23.6	540	520	45.0	35.0
62.5	15.4	15.2	47.4	50.4	45.4	48.4	31.9	34.9	28.9	32.9	21.5	21.5	539	519	45.0	35.0
100.0	19.8	19.6	44.3	47.3	42.3	45.3	27.8	30.8	24.8	28.8	20.1	20.1	538	518	45.0	35.0
160.0	25.6	25.4	41.2	44.2	39.2	42.2	23.7	26.7	20.7	24.7	18.7	18.7	537	517	45.0	35.0
200.0	29.0	28.7	39.8	42.8	37.8	40.8	21.8	24.8	18.8	22.8	18.0	18.0	537	517	45.0	35.0
250.0	32.8	32.6	38.3	41.3	36.3	39.3	19.8	22.8	16.8	20.8	17.3	17.3	536	516	45.0	35.0
300.0	36.4	36.1	37.1	40.1	35.1	38.1	18.3	21.3	15.3	19.2	16.8	16.8	536	516	45.0	35.0
350.0	39.4	36.1	39.1	34.1	34.1	37.1	16.9	19.9	13.9	17.9	16.3	16.3	536	516	45.0	35.0
400.0	43.0	42.6	35.3	38.3	33.3	36.3	15.8	18.8	12.8	16.8	15.9	15.9	536	516	45.0	35.0
Typical Performance 1-300 MHz	7% under worst case		5 dB over worst case		7 dB over worst case		10 dB over worst case		10 dB over worst case		1.8 dB over worst case		20 ns better than worst case		5 ns better than worst case	

All performance based on 100 meters

Values above 300 MHz are informational only

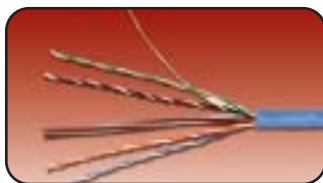
ELECTRICAL CHARACTERISTICS

Maximum DC Resistance (@ 20° C)	9.4 ohms/100m
Characteristic Impedance (no impedance averaging allowed)	1-100 MHz: 100 ohms ± 15% 100-250 MHz: 100 ohms ± 22%
Nominal Velocity of Propagation (NVP)	0.65

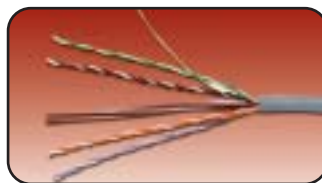
System 6® 4-Pair Solid UTP Cable:

- 9C6R4-E3PVC (CMR, CSA FT4), Blue Jacket, 305m box
- 9C6P4-E3Plenum (CMP, SCA FT6), Blue Jacket, 305m box
- 9C6X4-E3PVC (CMX, IEC 332.1), Grey Jacket, 305m box
- 9C6L4-E3LSOH (IEC 332.1), Violet Jacket, 305m box
- 9C6L4-E3-G.....LSOH (IEC 332.3c), Violet Jacket, 305m box

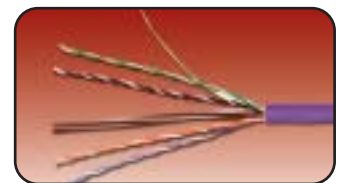
Other cable lengths also available: Add "-5CR" for 500m reel, "-1KR" for 1000m reel
Contact your local sales representative for cable availability and delivery lead time



9C6R4-E3/PC6P4-E3



9C6X4-E3



9C6L4-E3

Because we are continuously improving our products, The Siemon Company reserves the right to change specifications and availability without prior notice.
MAX®, MC® and System 6® are trademarks of The Siemon Company

For related product information request Spec Sheet(s):
MAX® 6 Modules (PROD-SS-MX6)
MC® 6 Modular Patch Cords (PROD-SS-MC6)

Siemon — EMEA HQ & UK
United Kingdom
Tel: +44 (0) 1483 480040

Siemon — France
Paris
Tel: +33 1 46 46 11 85

Siemon — Deutschland
Frankfurt
Tel: +49 (0) 69 97168 184

Siemon — Italia
Milano
Tel: +39 (02) 64 672 209

WWW.SIEMON.COM

ISO 9001 CERTIFIED ISO 14001 CERTIFIED

